

Fixture: _____ QTY: _____ Project : _____

Thinline Surface

Designer Series | Direct

Enhance your space with our designer line of luminaires. Our premium vinyl finish offers a range of patterns and textures that provide a stunning and realistic finish.

Features

Aluminum extruded body. Cast end caps with light block. Surface mounting. 2.25", 3.18", and 4.5" widths. Continuous runs available. Multiple vinyl finishes. Dry and Damp rated.

DLC Listed | cULus Listed

Designed and manufactured in North America
5 Year Warranty



Model: Thinline 3.18

Ordering Options

Sample Configuration: DTL V SU - 3.18 - 8 - D 500 - 90 - 4K - U - FR - W373 - S - DIMOFF - N - N - N

Model	Width	Continuous Run	Direct Lm/ft	CRI	Color Temp	Voltage	Direct Lens
DTL V SU	2.25	CR _____	D 250	80	27K 2700K	U 120/277V	FR Frosted Flat
	3.18	Min 2Ft (1Ft increments, Unibody up to 8Ft)	D 500	90	3K 3000K	H 347V	Optional
	4.5	Optional	D 750		35K 3500K		FFREG Frosted Regressed
		- Available in 6-inch increments	D 1000		4K 4000K		ASY Asymmetric Clear
			D _____ (custom up to 1200)		5K 5000K		0.5 FRDRP 0.5" Frosted Drop Lens
							1.5 FRDRP 1.5" Frosted Drop Lens
							LVR Louver Lens

Note: 1.5 Frosted Drop Lens for 2.25 and 3.18 model widths only.

DTLV SU

Vinyl Finish	Mounting	Driver	Controls
Code _____	S Solid	DIMOFF 0-10V DIMOFF	N None
- Please see Finish Options - Please contact factory for additional finishes	Optional	Optional	Optional
	STB 9/16 T-Bar 9/16	DALI Digital Addressable Lighting Interface	DMX Digital Multiplex
	STB 15/16 T-Bar 15/16	LUTRON Lutron Ecosystem	SNS Philips SNS 300 w/BLD & Daylight
		SR Philips SR	CLM Encelium CLM
		ELDO .1% ELDO (347 only 1-10 5%)	LG LG Dongle
			BT Bluetooth Mesh
			EN Enlighted Integral

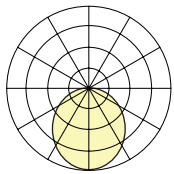
Accessories	Wiring
N None	N 5 Leads
Optional	Optional
10kV 10kV Surge Protection	5 WIRE 5 Wire
EM Emergency Battery	6 WIRE 6 Wire - Cable (EM - Emergency Battery Option)
+GTD Generator Transfer Device	

Note: - For Emergency Battery (EM), minimum length is 4'

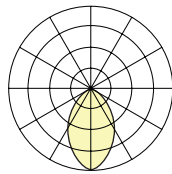
LED

L90>70,000
 Samsung 301 3-Step MacAdam Binning
 4000K 120 Lm/W
 3500K 98%
 3000K 96%
 90 CRI 85%

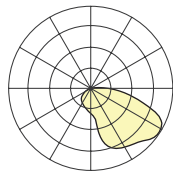
Lens Options - Direct Distribution



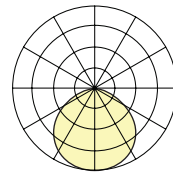
Standard
Frosted Flat



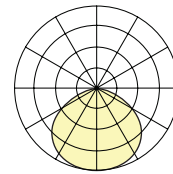
Frosted
0.25" Regressed



Asymmetric
Clear



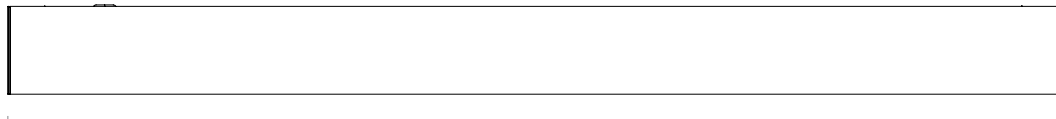
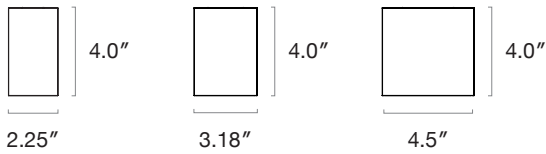
0.5" Drop Lens



1.5" Drop Lens

Note: For 2.25 and 3.18 model widths only

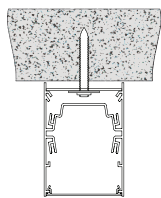
Dimensions



2': 24.2", 3': 36.2", 4': 48.2", 5': 60.2", 6': 72.2", 7': 84.2", 8': 96.2"

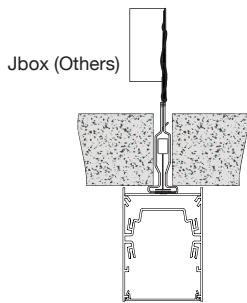
Actual Length = NOMINAL +.2"

Mounting



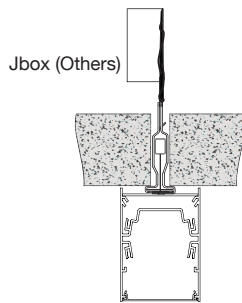
Solid Ceiling

1/4" -20 Thread Required (1)



T-Bar 9/16"

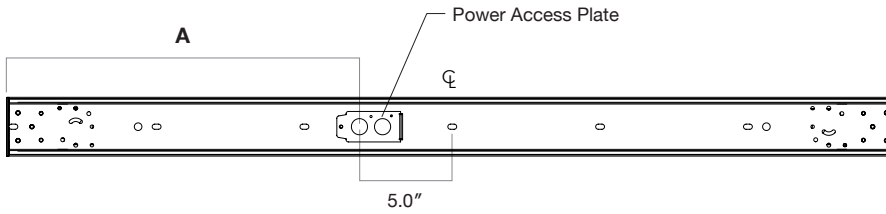
Aircraft Cable (ACY)



T-Bar 15/16"

Aircraft Cable (ACY)

Surface Mount Power Access



Distance from the Center Line (CL)

Model	Distance From End
DTL 2Ft	7.1"
DTL 3Ft	13.1"
DTL 4Ft	19.1"
DTL 5Ft	25.1"
DTL 6Ft	31.1"
DTL 7Ft	37.1"
DTL 8Ft	43.1"

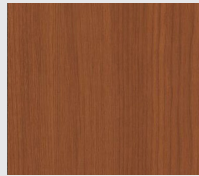
Finish Options



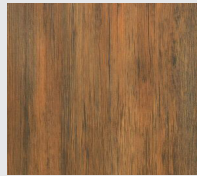
Ash Wood
ZX159



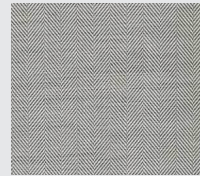
Wash Oak
W373



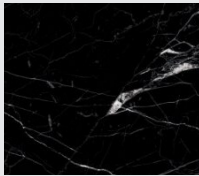
Maple Wood
W17



Antique Wood
W274



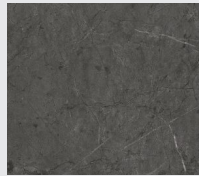
Herringbone - Fabric
RF007



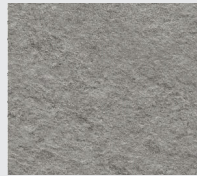
Black Marble
NS804



White Marble
NS895



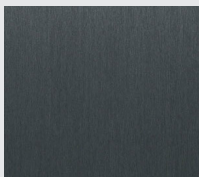
Grey Marble
PM007



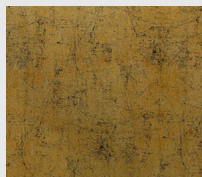
Granite
NS120



Aluminum
NS120



Metal Grey
RM001



Gold Crack
PZ05

Additional Finishes Available - Please contact factory