

Fixture: \_\_\_\_\_ QTY: \_\_\_\_\_ Project : \_\_\_\_\_

# Thinline Curve

## Designer Series | Direct, Direct-Indirect

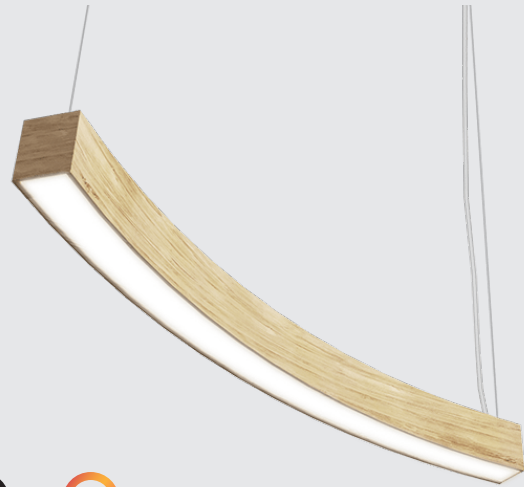
Enhance your space with our designer line of luminaires. Our premium vinyl finish offers a range of patterns and textures that provide a stunning and realistic finish.

### Features

Architectural luminaire. Contemporary design. Aluminum extruded body. Pendant mounting. Direct and Direct-Indirect distribution. Frosted lens. 3.18" wide by 4.125" high. 4' linear length with a 5' radius and 45° curve. Continuous runs available. Multiple vinyl finishes. Dry and Damp rated.

cULus Listed

Designed and manufactured in North America  
5 Year Warranty



## Ordering Options

Sample Configuration: DTL V CRV - C - 8 - 80 - 5 - 5- 4K - U - FR - ZX15 - AC - DIMOFF - N - 1 - N - 5WIRE - CL - 8 - WH

| Model     | Connection | Continuous Run                    | CRI | Direct Watts/ft | Indirect Watts/ft | Color Temp | Voltage    |
|-----------|------------|-----------------------------------|-----|-----------------|-------------------|------------|------------|
| DTL V CRV | C          | CR _____                          | 80  | 2.5             | 2.5               | 27K 2700K  | U 120/277V |
|           | S          | Please specify number of sections | 90  | 3.5             | 3.5               | 3K 3000K   | H 347V     |
|           |            |                                   |     | 5               | 5                 | 35K 3500K  |            |
|           |            |                                   |     | 7.5             | 7.5               | 4K 4000K   |            |
|           |            |                                   |     | 10              | 10                | 5K 5000K   |            |
| DTL V CRV |            |                                   |     |                 |                   |            |            |

| Lens (Direct/Indirect) | Vinyl Finish  | Mounting                       | Driver   | Controls  |
|------------------------|---|--------------------------------|--|---|
| FR Frosted             | Code _____<br>- Please see Finish Options<br>- Please contact factory for additional finishes | AC Aircraft Cable<br>10' (Std) | DIMOFF 0-10 DIMOFF<br><br>Optional<br>DALI Digital Addressable Lighting Interface<br>LUTRON Lutron Ecosystem<br>SR Philips SR<br>ELDO .1% ELDO<br>(347 only 1-10 5%) | N None<br><br>Optional<br>DMX Digital Multiplex<br>SNS Philips SNS 300 w/BLD & Daylight<br>CLM Encelium CLM<br>LG LG Dongle<br>BT Bluetooth Mesh<br>EN Enlighted Integral |
| FR                     |   | AC                             |  |   |

| Circuits                    | Accessories  | Wiring  | Wire Color                                     | Wire Length               | Canopy Color  |
|-----------------------------|--|---|--|---------------------------|---|
| 1 1 Circuit<br>2 2 Circuits | N None<br><br>Optional<br>10kV 10kV Surge Protection<br>EM Emergency Battery<br>+GTD Generator Transfer Device<br><br>Note: - For Emergency Battery (EM), minimum length is 4' (direct distribution), 8' (indirect distribution) | 5 WIRE 5 Wire (Std)<br><br>Optional<br>6 WIRE 6 Wire<br>N 5 Leads | CL Clear<br><br>Optional<br>B Black<br>W White | Length(Ft)<br>- 6Ft (Std) | WH White<br>GRY Grey<br>BLK Black<br>CU Custom<br>- Consult factory for custom finishes |
|                             |  |   |  |                           |   |

## Specifications

|                        |                                 |
|------------------------|---------------------------------|
| Efficacy:              | 100 Lm/W                        |
| CRI:                   | 80   90                         |
| Color Temperature:     | 3000K, 3500K, 4000K, 5000K      |
| Lumen Maintenance:     | 200,000+ Life Hours (L70)       |
| Voltage:               | 120/277V   347V                 |
| Operating Temperature: | -20°C to +40°C   -4°F to +104°F |
| Controls:              | 0-10V Dimming                   |
| Mounting:              | Aircraft Cable                  |

## Output Performance - Direct

| Model     | Watts/Ft | Lm/W | Delivered Lumens/Per Foot | Delivered Lumens/Per Section |
|-----------|----------|------|---------------------------|------------------------------|
| DTL Curve | 2.5      | 100  | 250                       | 1,000                        |
|           | 3.5      | 100  | 350                       | 1,400                        |
|           | 5        | 100  | 500                       | 2,000                        |
|           | 7.5      | 100  | 750                       | 3,000                        |
|           | 10       | 100  | 1000                      | 5,000                        |

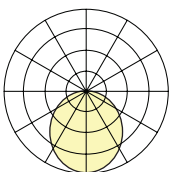
- Watts per foot available on all lengths
- LPW is with Frosted Lens

## Output Performance - Indirect

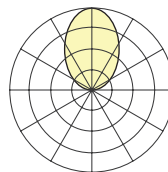
| Model     | Watts/Ft | Lm/W | Delivered Lumens/Per Foot | Delivered Lumens/Per Section |
|-----------|----------|------|---------------------------|------------------------------|
| DTL Curve | 2.5      | 100  | 250                       | 1,000                        |
|           | 3.5      | 100  | 350                       | 1,400                        |
|           | 5        | 100  | 500                       | 2,000                        |
|           | 7.5      | 100  | 750                       | 3,000                        |
|           | 10       | 100  | 1000                      | 5,000                        |

- Watts per foot available on all lengths
- LPW is with Frosted Lens

## Lens Options - Direct Distribution

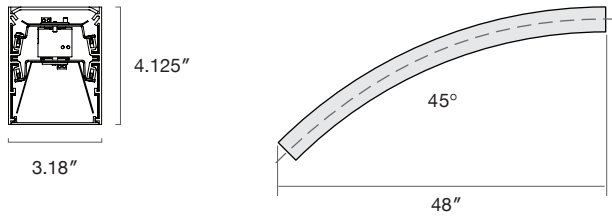


## Lens Options - Indirect Distribution



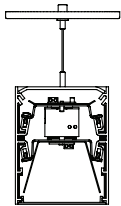
Standard  
Frosted

## Dimensions



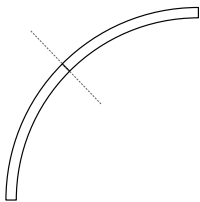
Note: End Cap Thickness=0.1". Add additional two End Cap thickness of 0.2" to length

## Mounting

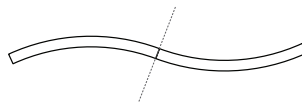


Aircraft Cable

## Connection Type

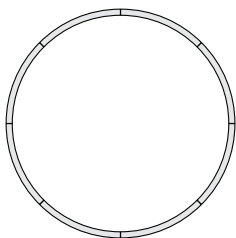


C - Connect

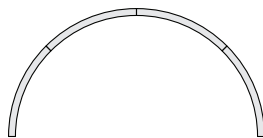


S - Connect

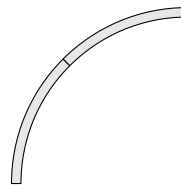
## Sample Configurations



8x4' Section  
Circle



4x4' Section  
1/2 Circle



2x4' Section  
1/4 Circle



4' Section  
Linear Shapes

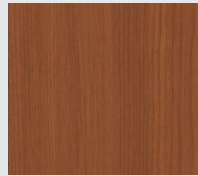
## Finish Options



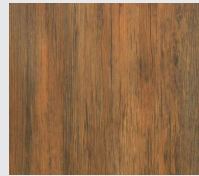
**Ash Wood**  
ZX15



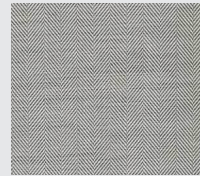
**Wash Oak**  
W373



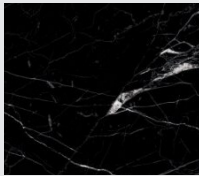
**Maple Wood**  
W17



**Antique Wood**  
W274



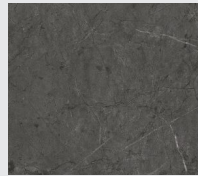
**Herringbone -  
Fabric**  
RF007



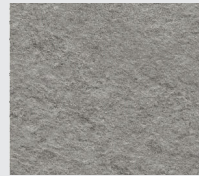
**Black Marble**  
NS804



**White Marble**  
NS895



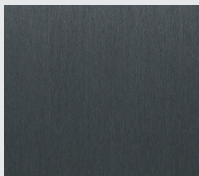
**Grey Marble**  
PM007



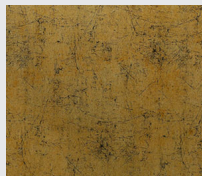
**Granite**  
NS120



**Aluminum**  
NS120



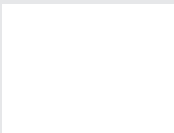
**Metal Grey**  
RM001



**Gold Crack**  
PZ05

Additional Finishes Available - Please contact factory

## Canopy Finish Options



**Signal White**  
RAL 9003



**Telegrey 2**  
RAL 7046



**Signal Black**  
RAL 9004

Additional Finishes Available - Please contact factory