

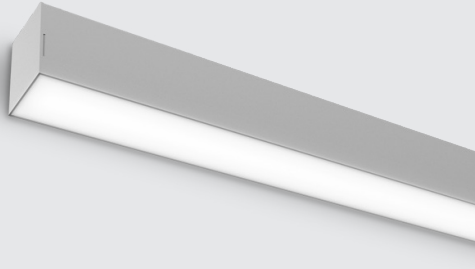


Date: _____ Fixture: _____

QTY: _____ Project: _____

Thinline

Wall Mount Direct



Cast End Caps with Light Block
Multiple Lens and Customizations Available

Architectural luminaire. Contemporary and minimal design. Aluminum extruded body. Wall mount applications. Direct distribution. 2.25", 3.18", and 4.5" widths. Continuous runs available. L90>70K hours. cULus Listed.

Designed and manufactured in North America.
5 Year Warranty.

Model Shown: Thinline 3.18

Ordering Options

| Model | Width | Continuous Run | Direct Lm/ft | CRI | Color Temp | Voltage | Lens |
|--------|-------|-------------------------------|-----------------------------|-----|------------|------------|------------------------------------|
| DTL WM | 2.25 | CR _____ | D 250 | 80 | 27K 2700K | U 120/277V | FR Frosted |
| | 3.18 | Min 2Ft | D 500 | 90 | 3K 3000K | H 347V | FRREG Frosted Regressed |
| | 4.5 | - Available in 6in increments | D 750 | | 35K 3500K | | ASY Asymmetric |
| | | - Unibody up to 8Ft | D 1000 | | 4K 4000K | | .5 FR DROP .5" Frosted Drop Lens |
| | | - Unibody up to 8Ft | D _____ (custom up to 1200) | | 5K 5000K | | 1.5 FR DROP 1.5" Frosted Drop Lens |
| | | | | | | | LVR Louver Lens |

| | | | | | | | |
|--------|--|--|--|--|--|--|--|
| DTL WM | | | | | | | |
|--------|--|--|--|--|--|--|--|

| Finish | Mounting | Driver | Controls | Circuits |
|------------------------------------|------------------------------|--|---|--------------------|
| GRY Grey | WM Wall Mount Bracket | DIMOFF 0-10 1% DIMOFF | N None | 1 1 Circuit |
| WH White | 12EX 12" Extended Arm | LUTRON SR Lutron Ecosystem Philips SR | DMX | |
| BLK Black | | DALI | SNS Philips SNS 300 w/BLD & Daylight | |
| CU Custom (consult factory) | | ELDO .1% ELDO (347 only 1-10 5%) | CLM Encellium CLM | |
| | | | LG LG Dongle | |
| | | | BT Bluetooth Mesh | |
| | | | EN Enlighted Integral | |

| | | | | |
|--|--|--|--|----------|
| | | | | 1 |
|--|--|--|--|----------|

| Accessories | Wiring |
|-----------------------------------|--|
| N None | N None |
| 10kV 10kV Surge Protection | (will provide 5 leads from mounting plate) |
| EMBAT 6W 90 Min Battery | |
| | N |

Sample Configuration: DTL WM - 4.5 - 8 - D 250 - 80 - 4K - U - FR - GRY - S - DIMOFF - N - 1 - N - N

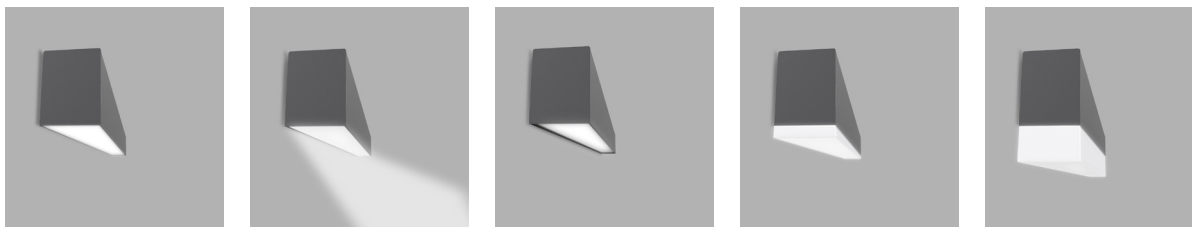
LED

L90 > 70,000
 Samsung 301 3 McAdam Binning
 4000K 120 Lm/W
 3500K 98%
 3000K 96%
 90 CRI 85%

Performance

| Model | Watts |
|-------|----------|
| 4000K | 120 Lm/W |
| 3500K | 116 Lm/W |
| 3000K | 112 Lm/W |

Optics



Flat

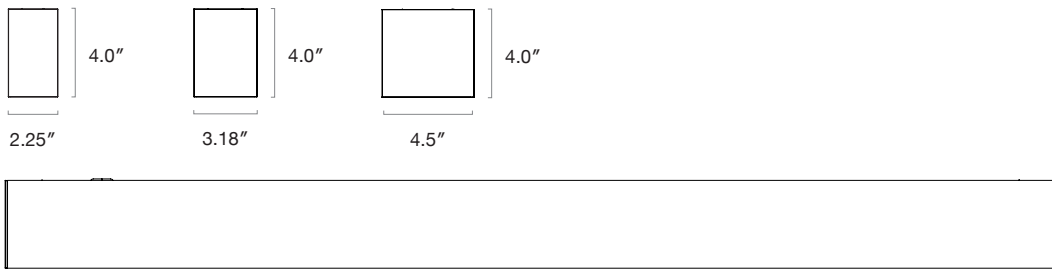
Asymmetric

0.25" Regressed

0.5" Drop Lens

1.5" Drop Lens

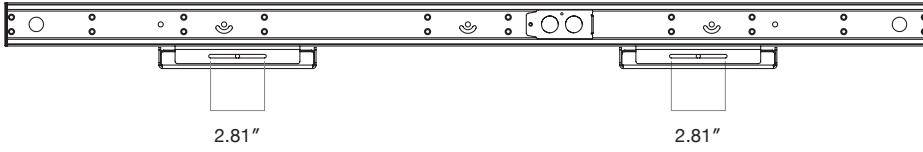
Dimensions



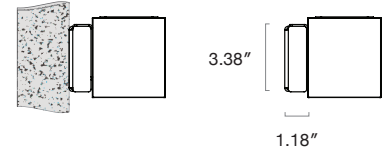
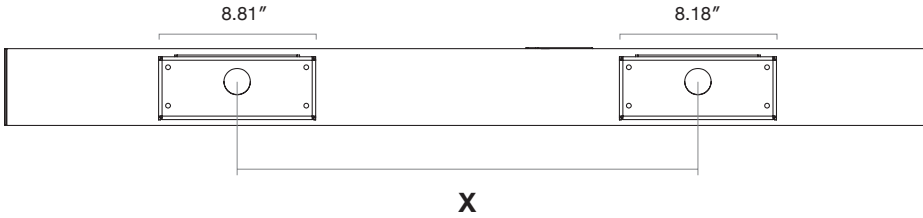
2': 24.2" 3': 36.2" 4': 48.2" 5': 60.2" 6': 72.2" 7': 84.2" 8': 96.2"

Actual Length = NOMINAL +.2"

Mounting - Wall Mount Bracket



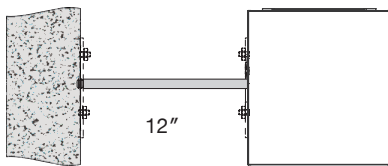
This is the central position of the wall mount bracket.
It can be adjusted Left/Right by 1.4". Secure light fixture using #8-32 screws (2x).



Mounting Locations

| Thinline Model | Mounting Reference |
|----------------|-----------------------------------|
| DTL 2 | Centerline |
| DTL 3 | |
| DTL 4 | 8" From Fixture Ends |
| DTL 5 | |
| DTL 6 | |
| DTL 7 | Centerline & 8" From Fixture Ends |
| DTL 8 | |

12" Extended Arm



Finish Options

Standard Finishes



Grey
RAL 7046
Sandtex



White
RAL 9003
Sandtex



Black
RAL 9004
Sandtex

Custom Finishes



Orange
RAL 2009
Sandtex



Green
RAL 6010
Sandtex



Blue
RAL 5012
Sandtex



Yellow
RAL 1037
Sandtex

Additional finishes - *Please contact factory*